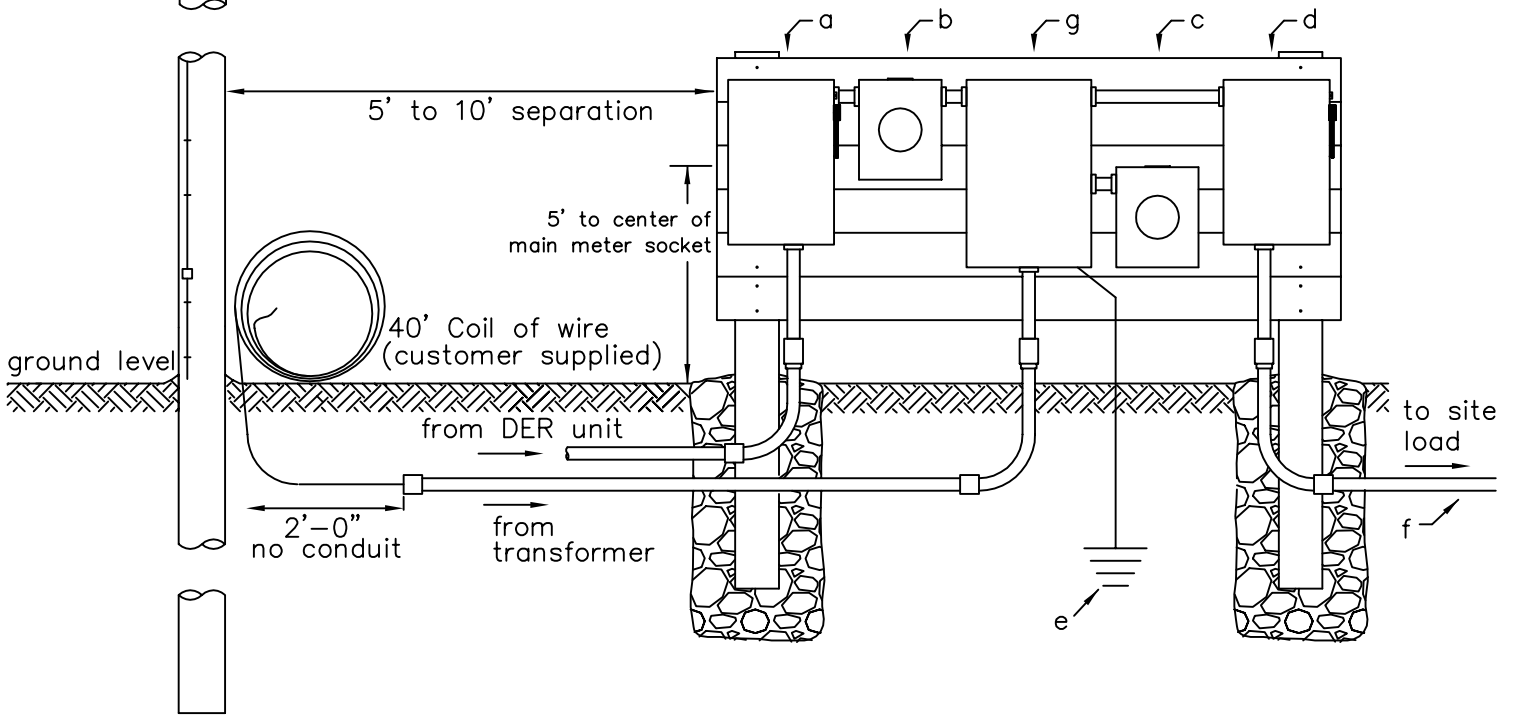


NOTES:

1. direct bury rated wire only
2. conduit optional
3. see associated drawing WPMS-1 or associated drawing SPMS-1
4. DER production meter wiring:
IA: Top lugs Utility, Bottom lugs DER
MN: Top lugs DER, Bottom lugs Utility
5. Service CT meter on line side of CT cabinet.



ITEM	To be supplied and installed by contractor/homeowner:
a	Applicable amp rated DER fused disconnect
b	Applicable amp rated lever bypass DER production meter socket
c	Applicable amp rated CT service meter socket
d	Applicable amp rated fused disconnect
e	Grounding in accordance with NEC requirements
f	Source and load side wire in accordance with NEC requirements
g	Applicable amp rated CT meter cabinet



DER SERVICE FROM OVERHEAD TRANSFORMER
POINT OF CONNECTION CT SERVICE
LESS THAN 400AMP

JUNE 2020

BY: JDG

DER-UGS-CT1-1