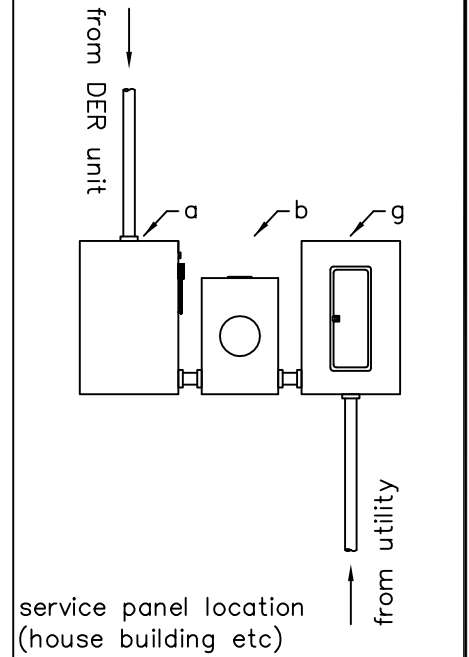
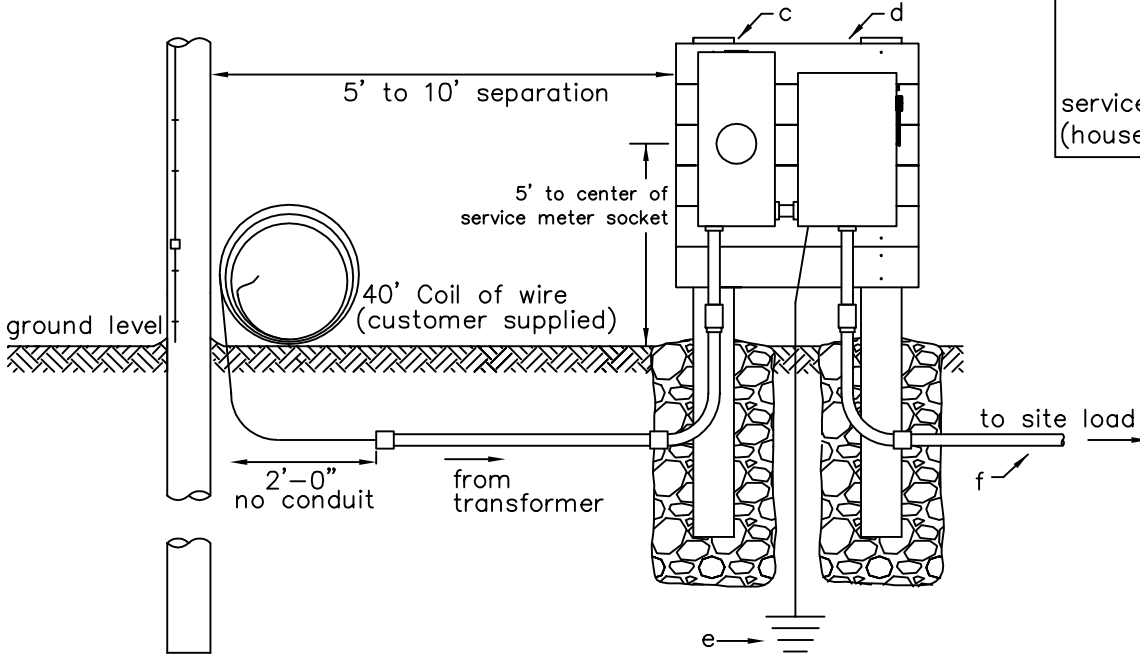
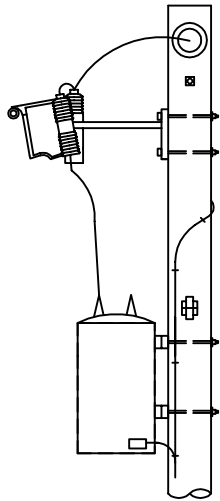


NOTES:

1. direct bury rated wire only
2. conduit optional
3. see associated drawing WPMS-1 or associated drawing SPMS-1
4. DER production meter wiring:  
IA: Top lugs Utility, Bottom lugs DER  
MN: Top lugs DER, Bottom lugs Utility
5. point of DER connection made on load side of the service panel
6. DER production meter (a) and disconnect (b) must be located outside
7. Utility disconnect (a) must be: lockable visibly open (knife-blade) accessible (outside)
8. service panel (g) can be inside or outside
9. All equipment to be applicably amp rated



ITEM	To be supplied and installed by contractor/homeowner:
a	DER fused disconnect / non fused disconnect
b	Lever bypass DER production meter socket
c	Lever bypass service meter socket
d	Service panel / fused disconnect
e	Grounding in accordance with NEC requirements
f	Source and load side wire in accordance with NEC requirements
g	Service panel



DER SERVICE FROM OVERHEAD TRANSFORMER  
POINT OF CONNECTION SERVICE PANEL  
100AMP, 200AMP OR 320AMP

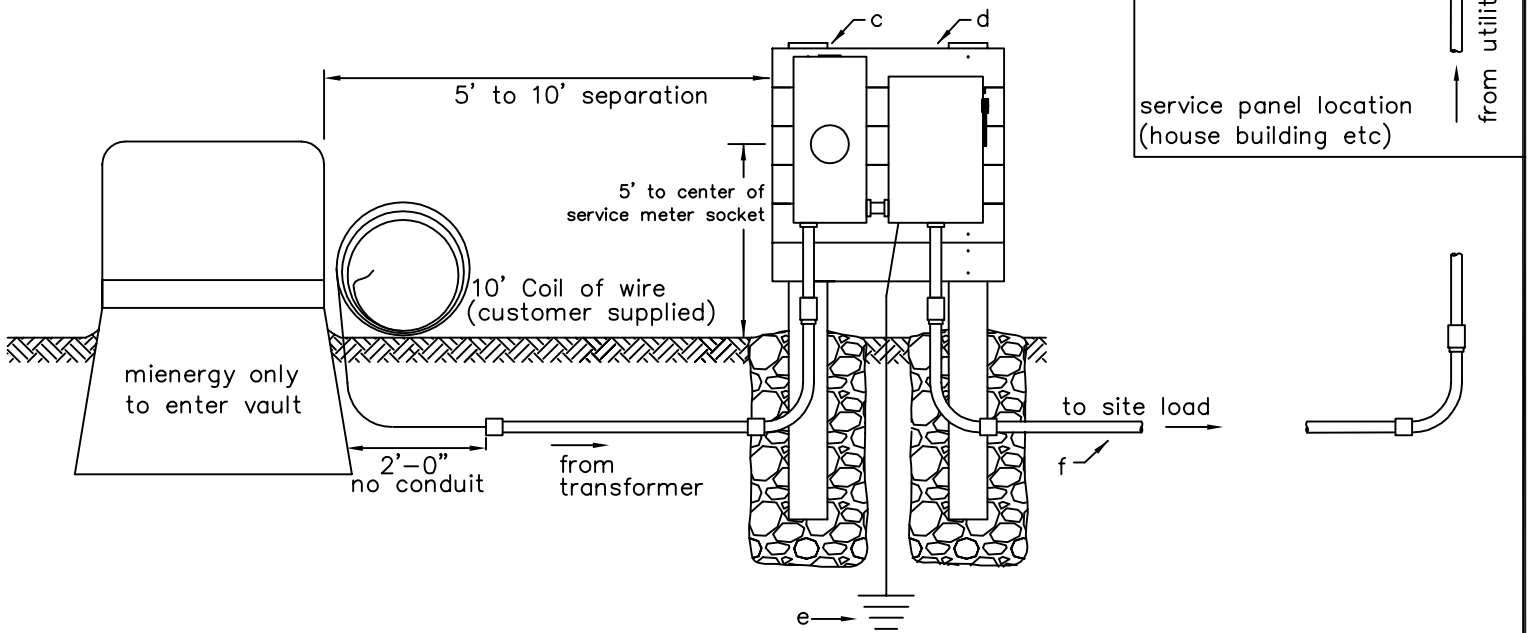
FEBRUARY 2023

BY: JDG

DER-UGS-SP-1

NOTES:

1. direct bury rated wire only
2. conduit optional
3. see associated drawing WPMS-1 or associated drawing SPMS-1
4. DER production meter wiring:  
IA: Top lugs Utility, Bottom lugs DER  
MN: Top lugs DER, Bottom lugs Utility
5. point of DER connection made on load side of the service panel
6. DER production meter (a) and disconnect (b) must be located outside
7. Utility disconnect (a) must be:  
lockable  
visibly open (knife-blade)  
accessible (outside)
8. service panel (g) can be inside or outside
9. All equipment to be applicably amp rated



ITEM	To be supplied and installed by contractor/homeowner:
a	DER fused disconnect / non fused disconnect
b	Lever bypass DER production meter socket
c	Lever bypass service meter socket
d	Service panel / fused disconnect
e	Grounding in accordance with NEC requirements
f	Source and load side wire in accordance with NEC requirements
g	Service panel



DER SERVICE FROM UNDERGROUND TRANSFORMER  
POINT OF CONNECTION SERVICE PANEL  
100AMP, 200AMP OR 320AMP

FEBRUARY 2023

BY: JDG

DER-UGS-SP-2