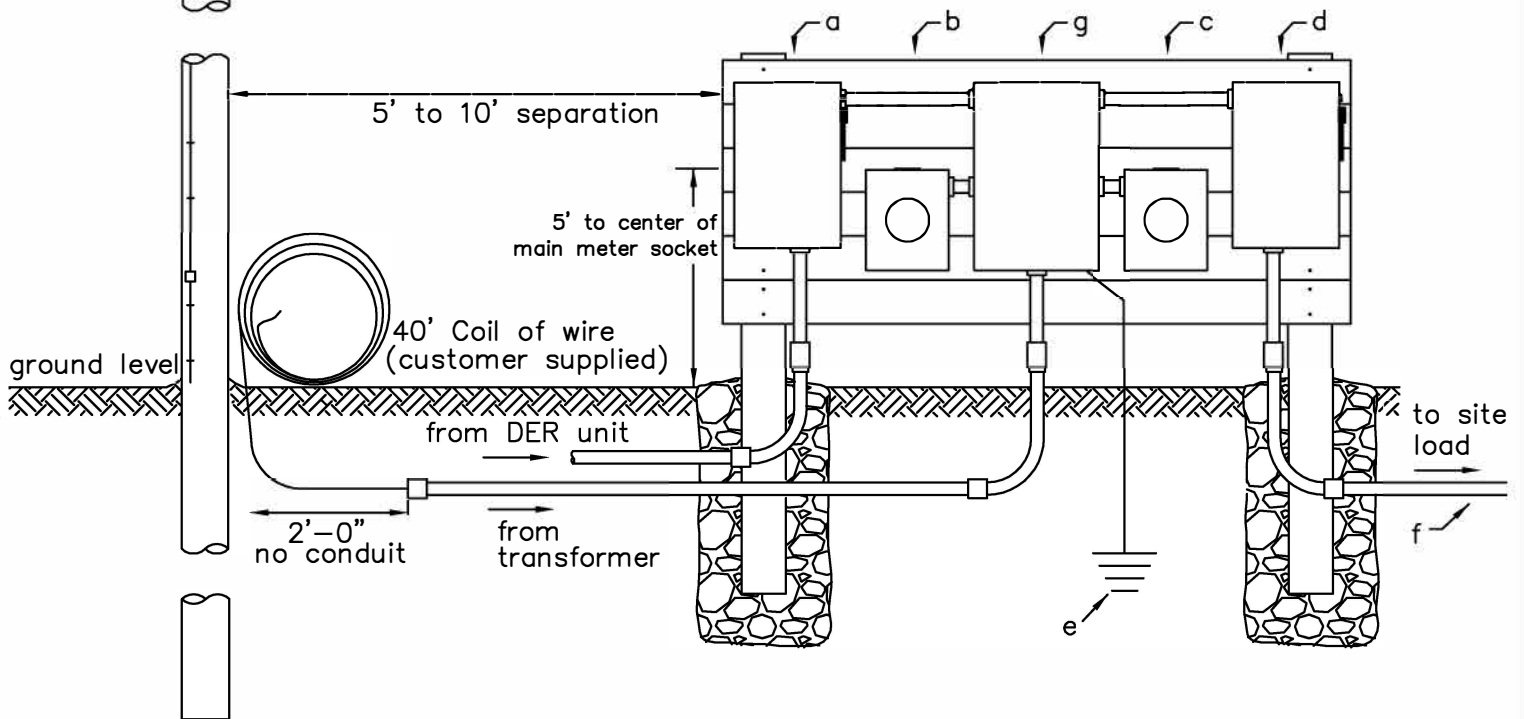


NOTES:

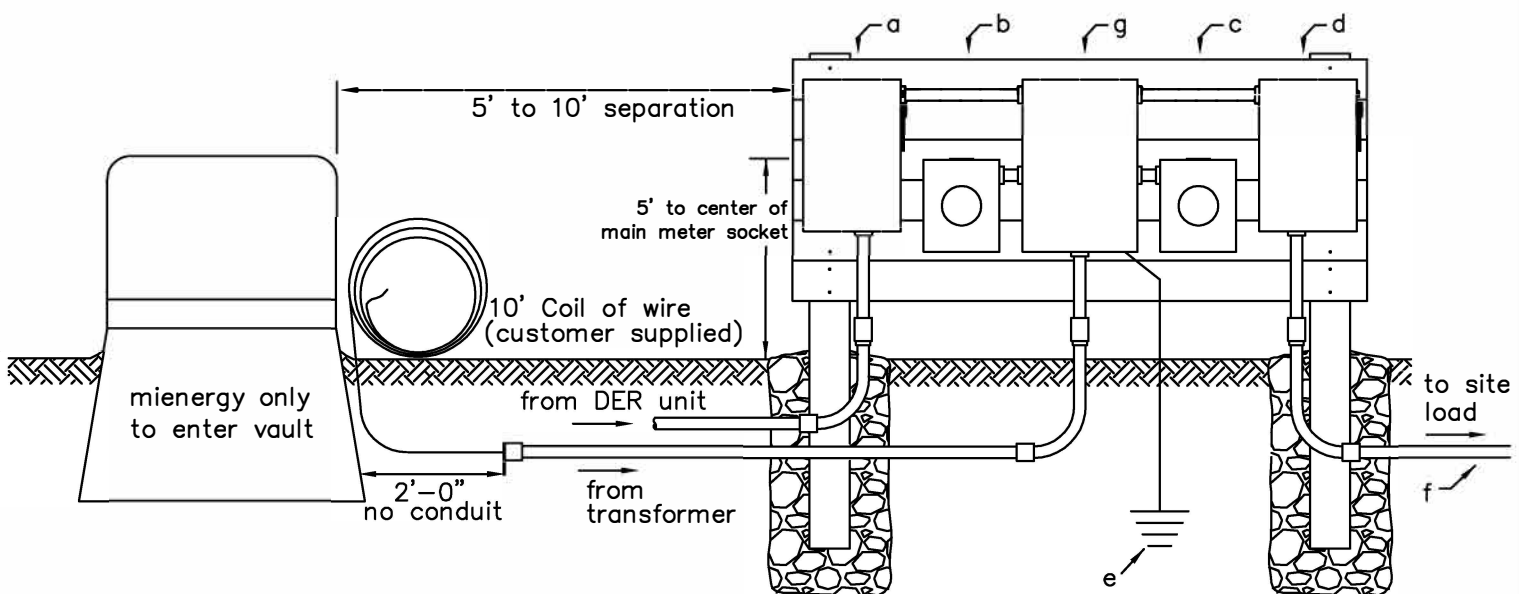
1. direct bury rated wire only
2. conduit optional
3. see associated drawing WPMS-1  
or associated drawing SPMS-1
4. DER CT meter on load side of CT cabinet  
Service CT meter on line side of CT cabinet
5. Utility disconnect (a) must be lockable, visibly  
open (knife-blade) and accessible (outside)




ITEM	To be supplied and installed by contractor/homeowner:
a	Applicable amp rated DER fused disconnect
b	Applicable amp rated DER production CT meter socket
c	Applicable amp rated CT service meter socket
d	Applicable amp rated fused disconnect
e	Grounding in accordance with NEC requirements
f	Source and load side wire in accordance with NEC requirements
g	Applicable amp rated CT meter cabinet

NOTES:

1. direct bury rated wire only
2. conduit optional
3. see associated drawing WPMS-1  
or associated drawing SPMS-1
4. DER CT meter on load side of CT cabinet  
Service CT meter on line side of CT cabinet
5. Utility disconnect (a) must be lockable, visibly  
open (knife-blade) and accessible (outside)



ITEM	To be supplied and installed by contractor/homeowner:		
a	Applicable amp rated DER fused disconnect		
b	Applicable amp rated DER production CT meter socket		
c	Applicable amp rated CT service meter socket		
d	Applicable amp rated fused disconnect		
e	Grounding in accordance with NEC requirements		
f	Source and load side wire in accordance with NEC requirements		
g	Applicable amp rated CT meter cabinet		
		DER SERVICE FROM OVERHEAD TRANSFORMER POINT OF CONNECTION CT SERVICE- 400 AMP to 4,000 AMP	
		JUNE 2020	BY: JDG      DER-UGS-CT2-2